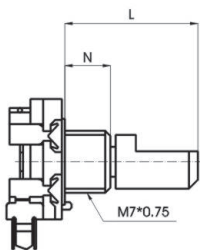


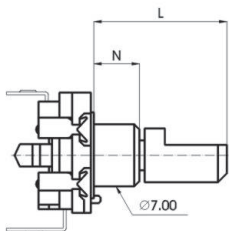
METAL SHAFT

Horizontal



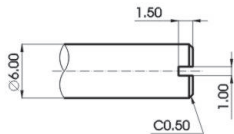
W	1	2	3
N	5	7	9

Vertical



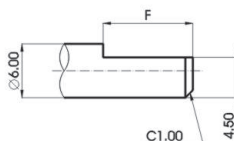
W	4	5
N	5	7

S TYPE:



X	Q	R	S	T		
L	15	20	25	30		

F TYPE:



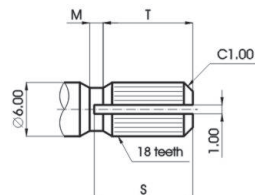
N:5

X	A	B	C	D		
L	15	20	25	30		
F	7	12	12	12		

N:7

X	A	B	C	D		
L	15	20	25	30		
F	7	7	12	12		

KQ TYPE:



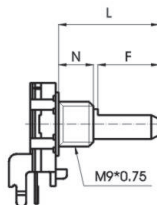
N:9

X	A	B	C	D		
L	15	20	25	30		
F	3.5	7	12	12		

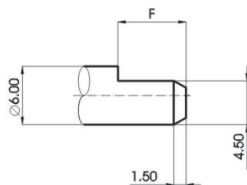
X	2	3	4	5		
L	15	20	25	30		
T	6	10	10	12		
M	1	1	2	4		
S	7	11	11	14		

INSULATED SHAFT

Horizontal



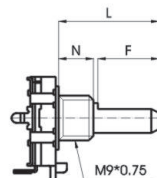
F TYPE:



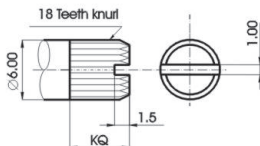
W	1	2
N	5	7

X	A	B	C		
L	15	20	25		
F	7	12	12		

Vertical



KQ TYPE:



KQ TYPE:

X	2	3	4		
L	15	20	25		
KQ	7	12	12		

Mechanical characteristics: 機械的性能

R111 □ E-

R161 □ E-

Total rotational angle 全迴轉角度	360°	
Click torque C.C. 扭力	5~19mN.m (51~194gf.cm)	4~20mN.m (40~204gf.cm)
Click position C.C. 位置	20/30 detent	12/24 detent
Push pull strength 軸推拉強度	80N (8kgf)	70N (7kgf)

Electrical characteristics: 電氣的性能

Ratings 定格	5V DC, 10mA	5V DC, 0.5mA
Withstand voltage 耐電壓	300V AC	50V AC
Max. operating current 最高使用電流	10mA	0.5mA
Insulation resistance 絕緣抵抗	more than 100MΩ at DC 300V	more than 10MΩ at DC 50V

Durability: 耐久的性能

Rotational life 迴轉壽命	15,000 cycles	100,000 cycles
-------------------------	---------------	----------------